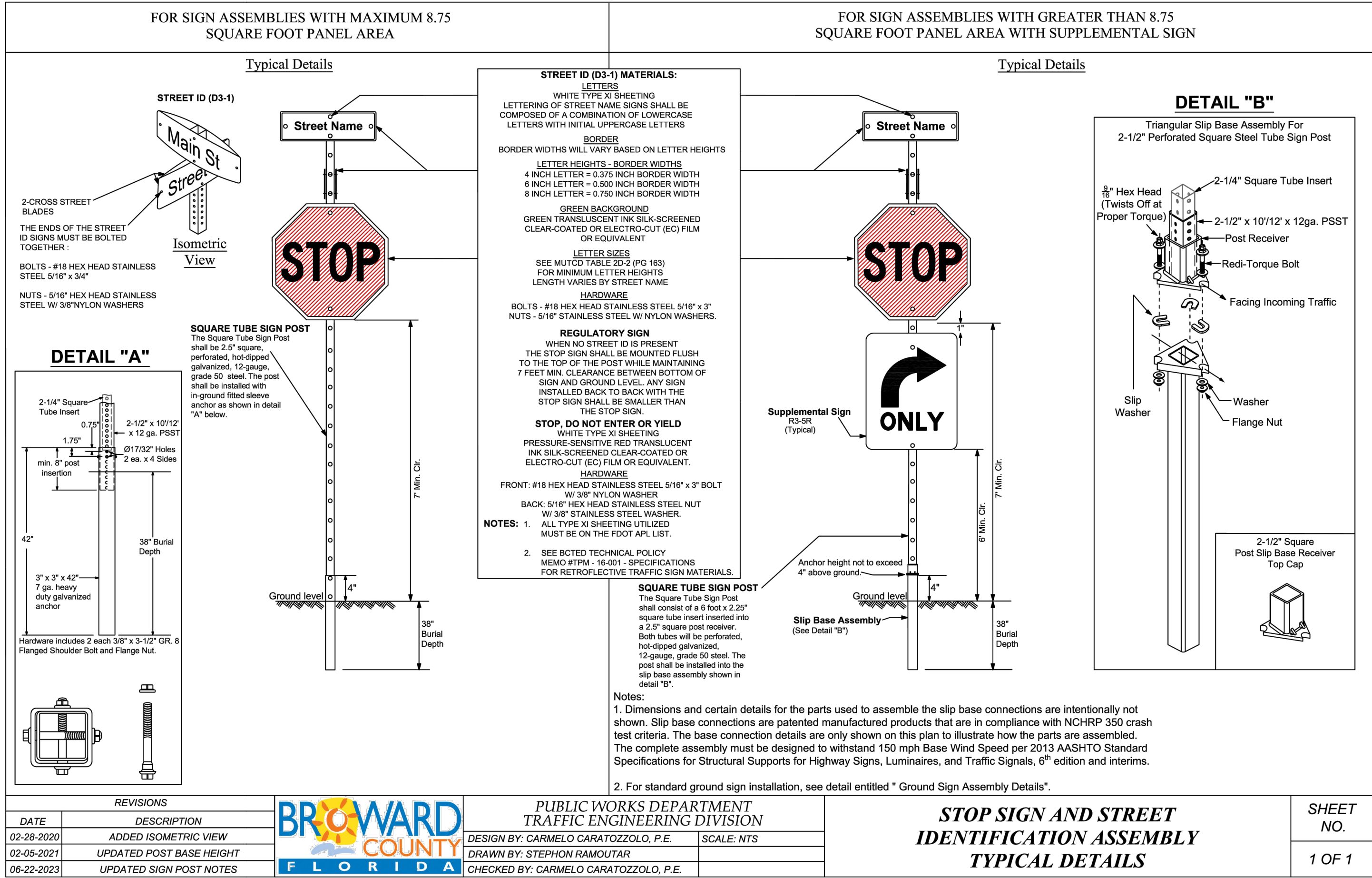
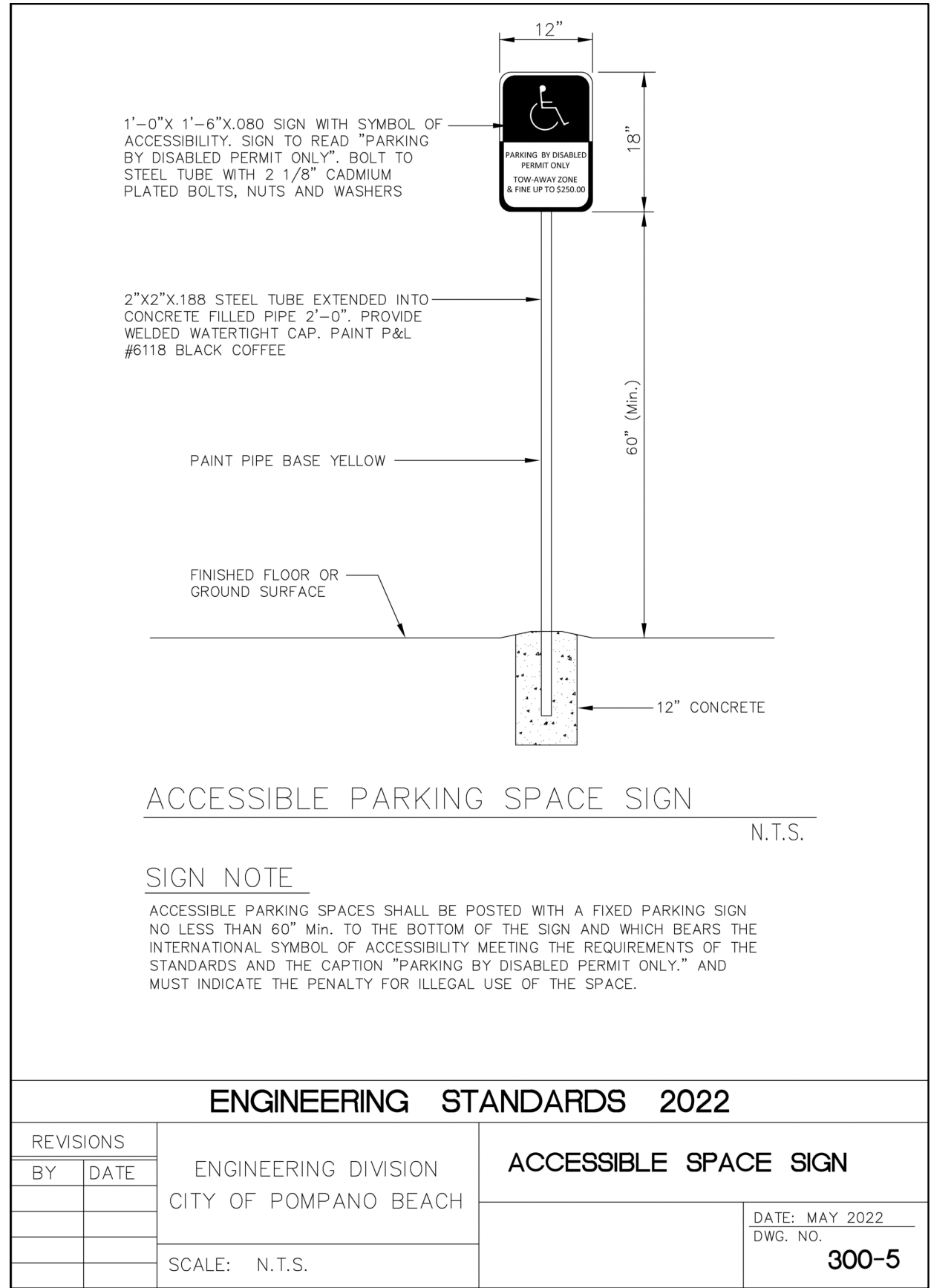
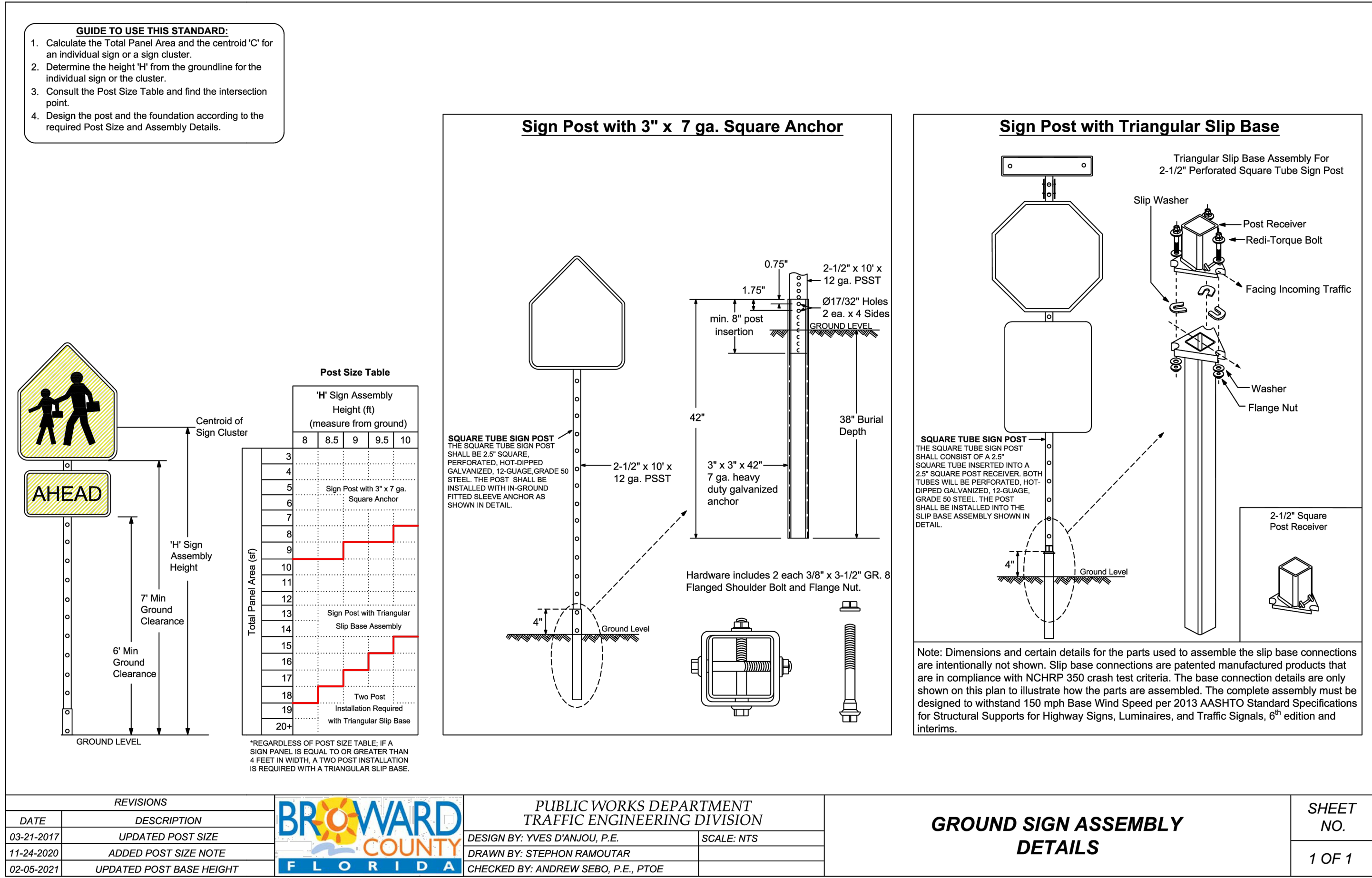


Plotted By: Villalon, Teresa Sheet: Set: ANIE ADDERLY GILLIS PARKING LOT Layout: C210 - SIGNAGE AND MARKING DETAILS August 13, 2025 04:27:37pm K:\VTL\GWIN\040 Jobs\04085115 E-20-20 CRA WAF Gillis Parking Lot\Design\CADD\PlanSheets\C210 - SIGNAGE AND MARKING DETAILS.dwg
This document, together with the concepts and designs presented herein, is an instrument of service, is intended only for the specific purpose and client for which it was prepared. Reuse of and improper reliance on this document without written authorization and adaptation by Kimley-Horn and Associates, Inc. shall be without liability to Kimley-Horn and Associates, Inc.



PLANS ARE IN NAVD 1988 DATUM
CONVERSION EQUATION IS BELOW:
(NAVD 1988) + 1.57' = (NGVD 1929)

Teresa Villalon-Camacho, State of Florida, Professional Engineer,
License No. 94893

This item has been digitally signed and sealed by Teresa
Villalon-Camacho on the date indicated here.

Signature must be verified on any electronic copies.

Kimley»Horn

© 2024 KIMLEY-HORN AND ASSOCIATES, INC.
8209 KETTER ROAD, SUITE 200, DALLAS, TEXAS 75247
PHONE: 954-535-5100 FAX: 954-739-2247
WWW.KIMLEY-HORN.COM REGISTRY No. 696

**ANIE ADDERLY GILLIS
PARKING LOT
PREPARED FOR
CITY OF POMPAÑO BEACH**

**SIGNAGE AND
MARKING DETAILS**

REVISIONS

No.	REVISIONS	DATE	BY

FL

0000033